



Paint the Town Red

GWENDOLYN PLUMMER / ASSOCIATE EDITOR

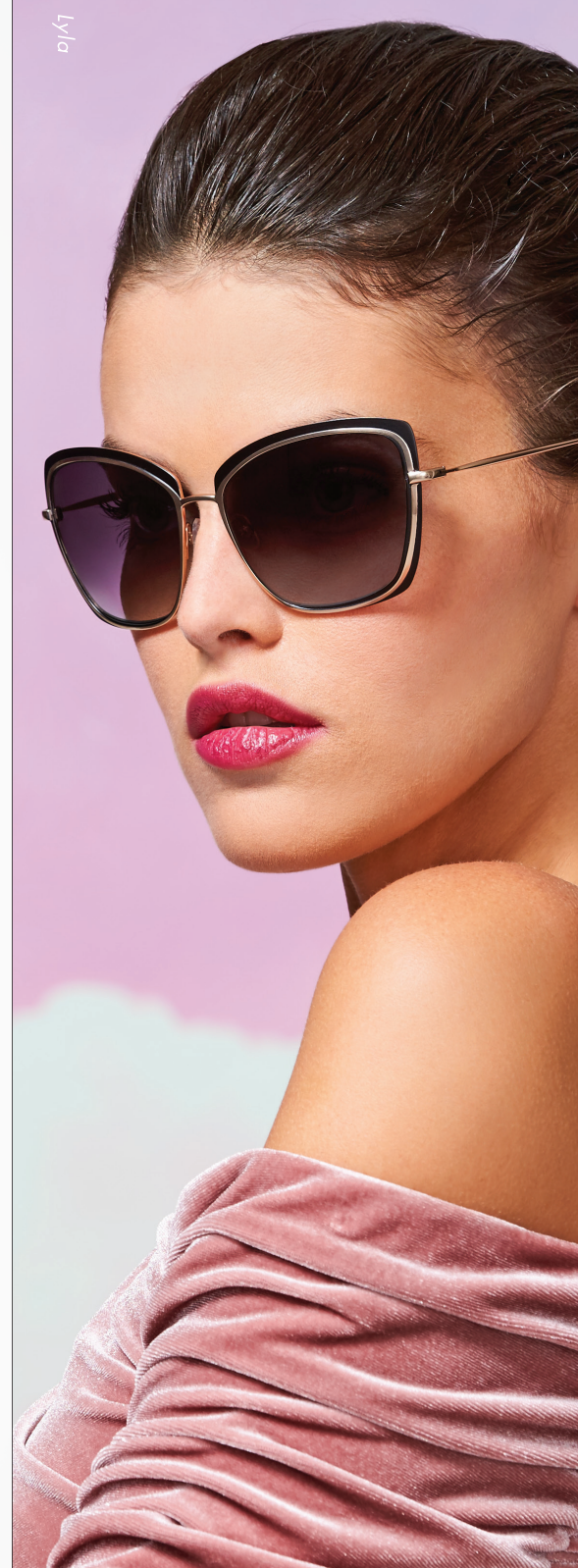
WHO: For those who want a pop of color, a bit of excitement, and a lot of compliments.

WHAT: Frames that incorporate a bold red shade that brings a sense of bravery, adventure and passion to their look.

WEAR: (Top to Bottom): From **Match Eyewear's** Cosmopolitan, the Jaden in Ruby is an eye-catching and flattering geometric frame that ups the ante with a translucent red acetate. From **Villa Eyewear**, Mad in Italy Da Vinci features a pop of red along the temples, creating an unsuspecting look that demands a second glance. Finally, from **OVVO Optics'** Wood, Carbon & Gold collection, style 3900 combines premium materials with a bright red to pull out all the stops.

WHY: There's no better time to wear red than February. Love and passion are in the air, sure, but a fire truck frame also brings a spark of color to days that are often otherwise dull, dreary and cold. Impossible to overlook and sure to spark conversations, the red trend allows wearers to make a statement just by walking into the room.

gplummer@jobson.com



**BADGLEY
MISCHKA.**

ELEGANT. ALLURING. REFINED.

McGeeGroup.com | 855.957.1956